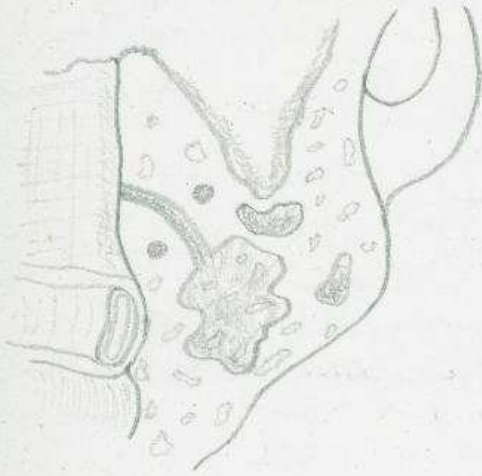


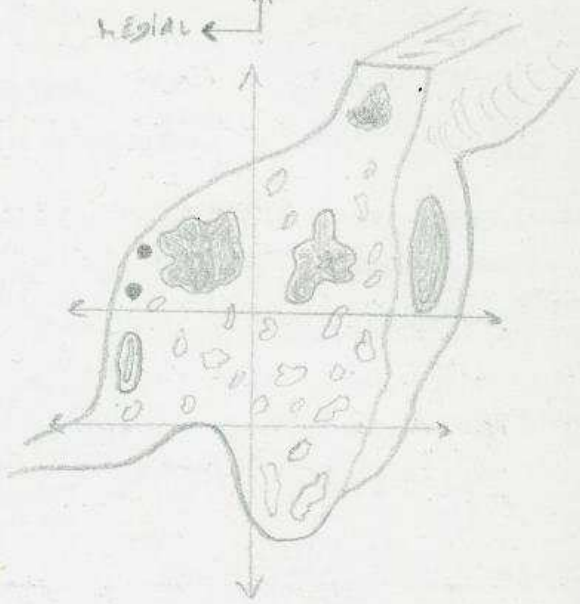
COUPE HORIZONTALE

VENTRAL
↳ LATÉRAL



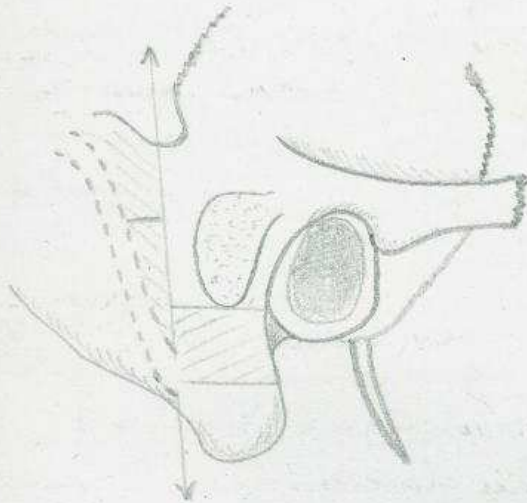
COUPE FRONTALE

CRÂNIAL
↳ MÉDIAL



PROJECTION EXTERNE

CRÂNIAL
↳ VENTRAL



CAVITÉ DE MASTO-
ANTRO-ATTICOTOMIE

CRÂNIAL
↳ VENTRAL

